

**ORIGINATOR: HEAD OF COMMISSIONING
AND GOVERNANCE**

DECISION NUMBER: 23 - 2025

REASON FOR SUBMISSION: FOR DECISION

SUBMITTED TO: POLICE AND CRIME COMMISSIONER

**SUBJECT: AWARD OF CRIME AND DISORDER REDUCTION GRANT – CATCH22
SUFFOLK POSITIVE FUTURES 2025/26**

SUMMARY:

1. In accordance with the provisions in the Anti-Social Behaviour, Crime and Policing Act 2014 the Police and Crime Commissioner can commission services that:
 - a) secure, or contribute to securing, crime and disorder reduction in Suffolk;
 - b) are intended to help victims or witnesses of, or other persons affected by, offences and anti-social behaviour.
2. This report seeks approval to award a Crime and Disorder Reduction Grant to the Catch22 Suffolk Positive Futures project totalling £97,330 for the period 1 April 2025 to 31 March 2026.
3. Suffolk Positive Futures delivers an 'early intervention' approach to tackling crime and anti-social behaviour by providing a compelling alternative for young people through the delivery of sports-based activity.
4. The funding will support Theme 2 in the Police and Crime Plan 2025-2029 by investing in an initiative which prevents crime and disorder and anti-social behaviour.

RECOMMENDATION:

1. It is recommended that the Police and Crime Commissioner (PCC) awards grant funding of £97,330 to Catch22 for delivery of the Suffolk Positive Futures project between 1 April 2025 and 31 March 2026.

APPROVAL BY: PCC

The recommendation set out above is agreed.

Signature:

Tina Parry

Date: 7 July 2025

DETAIL OF THE SUBMISSION

1. INTRODUCTION

- 1.1 In accordance with the provisions in the Anti-Social Behaviour, Crime and Policing Act 2014 the Police and Crime Commissioner can commission services that:
- secure, or contribute to securing, crime and disorder reduction in Suffolk;
 - are intended to help victims or witnesses of, or other persons affected by, offences and anti-social behaviour.
- 1.2 In applying this provision, the PCC will ensure that the services commissioned are also consistent with Theme 2 in the [Suffolk Police and Crime Plan 2025-2029](#).
- 1.3 This report seeks approval to award a Crime and Disorder Reduction Grant to Catch22 for delivery of the Suffolk Positive Futures project totalling £97,330 for the period 1 April 2025 to 31 March 2026.

2. POLICE AND CRIME PLAN 2025-2029

- 2.1 In March 2025, a new Police and Crime Plan for the period 2025-2029 was published. Theme 2 sets out the intention to provide services which support victims of crime and invest in initiatives which reduce crime, disorder, offending and prevent victimisation.
- 2.2 The proposed grant to Catch22 is for the delivery of the Suffolk Positive Futures project which will contribute to the following activity within Theme 2, Objective 2 of the Plan:
- Support problem-solving in local communities, by investing in local solutions and commissioning local assets which reduce reoffending, prevent crime and disorder, or improve community safety.
 - Supporting young people – for example initiatives which divert young people from criminality, enhance their skills or provide crime prevention advice and support so they do not become victims of exploitation.
 - Consider initiatives which reduce the demand on the police.

3. CATCH22 - SUFFOLK POSITIVE FUTURES

- 3.1 Catch22 is a charity that describes itself as a not-for-profit business with a social mission. The organisation works across five areas: justice; education; vocational training and employability; young people and families; and National Citizen Service to design and deliver services that build resilience and aspiration in people of all ages within communities across the UK.
- 3.2 The Catch22 Suffolk Positive Futures early intervention project is designed to reach young people at times when they are most in need. The project, supported by the PCC since 2013, has been transforming young people's lives and making a significant impact in some of the most deprived communities in Suffolk.
- 3.3 The project transforms lives by providing long-term support to vulnerable 10–19-year-olds at risk of crime and anti-social behaviour (ASB), primarily through sport-based activity. Suffolk Positive Futures also delivers 'holiday hunger' and summer-holiday diversionary projects; sports leadership qualifications; and awareness raising sessions covering drugs, alcohol and healthy living. The service operates outside of standard youth provision hours in order to prevent anti-social behaviour.

- 3.4 The project delivers an 'early intervention' approach to tackling crime and ASB by providing a positive alternative to deter young people from crime. The project contributes to the following key priorities in relation to making Suffolk a safer area for all by:
- Diverting young people from involvement in ASB and gang related activity, especially the young people on the periphery of engaging in this activity.
 - Supporting local communities to tackle ASB, through engagement and diversion.
 - Addressing the risk factors and strengthening the protective factors to enable young people to choose leadership and positive community action instead of crime.
 - Reducing crime and, by preventing offending and ASB, decreasing demand for front-line criminal justice services.
- 3.5 The proposed PCC funding will support the Project Manager and Coordinator posts. Funding for 17 sessional staff and the direct cost of the activities is generated through a wide variety of other partners, including charitable foundations and local authorities.
- 3.6 Many of the volunteers supporting the project are previous service users who engage in volunteering to contribute back to the community. Volunteer time provides value for money and enhances the PCC's objectives in his Police and Crime Plan to maximise social value.
- 3.7 The Suffolk Positive Futures project engages the most vulnerable people in Suffolk by running the projects in areas of high deprivation and where higher rates of crime and ASB are reported. The project's delivery is county-wide with ongoing delivery commitments at: multiple sites across Ipswich and Lowestoft, Felixstowe, Hadleigh, Haverhill, Brandon, Newmarket and Mildenhall. The additional school-holiday projects are run in partnership with local authorities. Appendix A sets out the anticipated delivery in 2025/26.

Service Delivery and Impact

- 3.8 The latest Catch22 Suffolk Positive Futures monitoring report (April 2024 – March 2025) illustrates the project's impact through:
- 1,503 young people attending the project through 10,023 attendances (previous year 1,536 and 10,477 attendances).
 - 642 activity sessions delivered and over 1,140 hours of sporting activity provided;
 - engaging with a diverse cohort of participants: 24% were females, 15% were from a Black, Asian, or other minority ethnic backgrounds, 69% White British and 15% White other;
 - supporting 13 young people not in education to work towards a recognised qualification;
 - supporting 22 young people into volunteering placements.
- 3.9 The service reports against the following key outcomes (published in the Police and Crime Plan Performance Framework):
- Improved Confidence, Resilience and Feelings of Safety: 96% felt safer in their community due to participation in the project; 82% had improved confidence.
 - Increased Education, Skills, Training and Employability: 13 young people not in education were supported to work towards a recognised qualification; 22 young people were supported into volunteering placements.
 - Improved Mental Health, Reduced Addiction and Homelessness 88% of those who felt it relevant to them, said that their mental health had improved due to their regular attendance at the sessions.
- 3.10 Catch22 captures feedback through an ongoing survey with participants. In 2024/25, 142 young people completed the survey and, in addition to the key outcomes above, the results illustrate that:
- 100% of respondents said they would recommend the project to other young people;

- 100% felt their physical health had improved;
- 95% of those who felt it relevant to them, said that they were more able to enjoy life after attendance at the sessions.

In response to the survey question “what else have you gained from attending the project”:

- 72% said they now had access to role models;
- 50% said they liked being part of a team;
- 42% said they now take pride in their local area;
- 22% said they were no longer getting into trouble;
- 32% said they were no longer hanging around on the streets;
- 62% said they made new friends;
- 95% said they had improved fitness levels.

3.11 To ensure alignment with the PCC’s Themes and Objectives in his Police and Crime Plan 2025-2029, Catch22 continues to enhance delivery by working with the Suffolk Youth Justice Service (SYJS) and Suffolk Constabulary to increase referrals of young people known to the criminal justice system, or those who are vulnerable to criminal activities and exploitation. The work to reduce crime and ASB and prevent offending is intended to decrease the demand for front line services as well as improve young people’s trust and confidence in policing.

- Suffolk Constabulary is a partner of the Positive Futures Steering Group and, in 2024/25, 8 individual officers attended 13 sports sessions;
- 13% of referrals were formal referrals from partners including police and youth justice;
- In addition to standard training, project staff have completed training on substance misuse and emerging trends to better support the young people.

3.12 The project targets specific geographic areas for delivery in line with data, identified need and professional opinion from police and partners.

- Catch22 has provided additional data to show the correlation between delivery and areas of deprivation. See Appendix B;
- In 2024/25, 1,503 young people living in the top 40% deprived areas of Suffolk engaged with the service. Ipswich and Lowestoft both feature in the top 20% ‘most deprived areas’ nationally; 1,112 of the young people Catch22 supported in 2024/25 were through projects in these areas. The project supported 177 young people in the Maple Park area of Ipswich, and 77 on the Gunton estate in Lowestoft.
- A new multi-sport project in Beccles and an evening football project in Lowestoft (for young adults) commenced in April 2025, and a football project in Leiston is due to commence in Autumn 2025.

4. MONITORING AND OUTCOMES

4.1 Grant monitoring will be undertaken at mid-year and year-end through written reports setting out activity and progress towards outcomes, along with financial expenditure. These reports will be supplemented by meetings between the OPCC and Catch22.

4.2 The service will report on how it has met the following outcomes detailed in the Police and Crime Plan Performance Framework.

1. Improved Confidence, Resilience and Feelings of Safety: through young people reporting improved confidence (82% in 24/25) and feeling safer in their communities (96%).
2. Increased Education, Skills, Training and Employability: with an anticipated 20 vulnerable young people not in school or mainstream education to gain a recognised qualification (22 in 24/25) and 15 vulnerable young people to pursue volunteering activities (13).

3. Reduced Offending, Violence & Exploitation: reduction in ASB levels
 4. Improved Mental Health, Reduced Addiction and Homelessness; through young people reporting improvements to mental health due to regular attendance at the sessions (88% in 2024/25).
- 4.3 In addition, the service will deliver and report on the following using project data, surveys and qualitative feedback from participants, parents and partners:
- Generation of match-funding through local and national funding opportunities. This decision paper recommends that the PCC increases the grant amount in 2025/26. Catch22 has advised that they hope to secure £80,000 of match-funding (other external income) during the year. Match-funding will be monitored through bi-annual reporting mechanism;
 - Continued delivery in areas that are a priority for policing, the PCC and local communities and in the 'most deprived 20%' areas of Suffolk;
 - Continued engagement with Suffolk Constabulary and partners, raising awareness and driving up referrals;
 - Work with a minimum of 1,500 young people in the most deprived 20% areas of Suffolk;
 - Deliver a minimum of 1,200 hours of activity in those areas to divert young people from criminal activity and provide a safe place;
 - Gather service user feedback to assess progress towards outcomes and monitor feedback on the safety of local areas, crime, ASB and victimisation.

5. FINANCIAL IMPLICATIONS

- 5.1 The total cost of delivery is estimated at £177,330 which covers staff costs, travel, programme delivery, facilities, supplies, IT and Catch22 management charges. It is recommended that the PCC provides grant funding of £97,330 towards the delivery this service between 1 April 2025 to 31 March 2026.
- 5.2 This proposed PCC funding is an increase of 30% on the previous grant value awarded in 2024/25 which is in response to cost pressures on the service. The PCC element is utilised towards the salary costs of the full-time permanent Project Manager and Coordinator salaries, including National Insurance and pension and a contribution to operational costs of running the project.
- 5.3 Catch22 will cover the remainder of the costs through their own fund raising and seeking additional grants. There is a strong track record of income generation and in 2024/25 additional funding was secured from 13 other local and national organisations meaning that for every £1 invested from the PCC another £0.93p of additional funding was secured by Catch22. Catch22 have already secured some additional funding for delivery in 2025/26 and aim to work with at least 10 other organisations.
- 5.4 Catch22's additional funding is utilised toward sessional staff and delivery costs and is generated through a wide variety of other sources including local and national charitable foundations and local authorities. The project makes full use of volunteers including previous service users who want to give something back to the project.
- 5.5 This is a one-off grant covering the period 1 April 2025 – 31 March 2026; Catch22 must meet any costs incurred after the grant termination date.

6. OTHER IMPLICATIONS AND RISKS

- 6.1 An assessment of risk in delivery of the service has been undertaken. This assessment has considered the value of the grant sought, the duration of delivery and the grant recipient's history of delivery and ability to deliver. The monitoring arrangements outlined in the conditions of award reflect the fact that Catch22 Suffolk Positive Futures continue to successfully deliver the service and regularly report on activity and outcomes.
- 6.2 Suffolk Positive Futures are required to notify the PCC should there be any risk to the service being delivered.

7. RECOMMENDATION

- 7.1 It is recommended that the Police and Crime Commissioner (PCC) awards grant funding of £97,330 to Catch22 for delivery of the Suffolk Positive Futures project between 1 April 2025 and 31 March 2026.

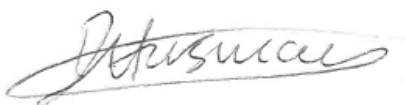
ORIGINATOR CHECKLIST (MUST BE COMPLETED)	PLEASE STATE 'YES' OR 'NO'
Has legal advice been sought on this submission?	NO
Has the PCC's Chief Finance Officer been consulted?	NO
Have equality, diversity and human rights implications been considered including equality analysis, as appropriate?	YES
Have human resource implications been considered?	YES
Is the recommendation consistent with the objectives in the Police and Crime Plan?	YES
Has consultation been undertaken with people or agencies likely to be affected by the recommendation?	YES
Has communications advice been sought on areas of likely media interest and how they might be managed?	YES
Have all relevant ethical factors been taken into consideration in developing this submission?	YES

In relation to the above, please ensure that all relevant issues have been highlighted in the 'other implications and risks' section of the submission.

APPROVAL TO SUBMIT TO THE DECISION-MAKER

Chief Executive

I am satisfied that relevant advice has been taken into account in the preparation of the report and that this is an appropriate request to be submitted to the PCC.



Signature:

Date: 7 July 2025

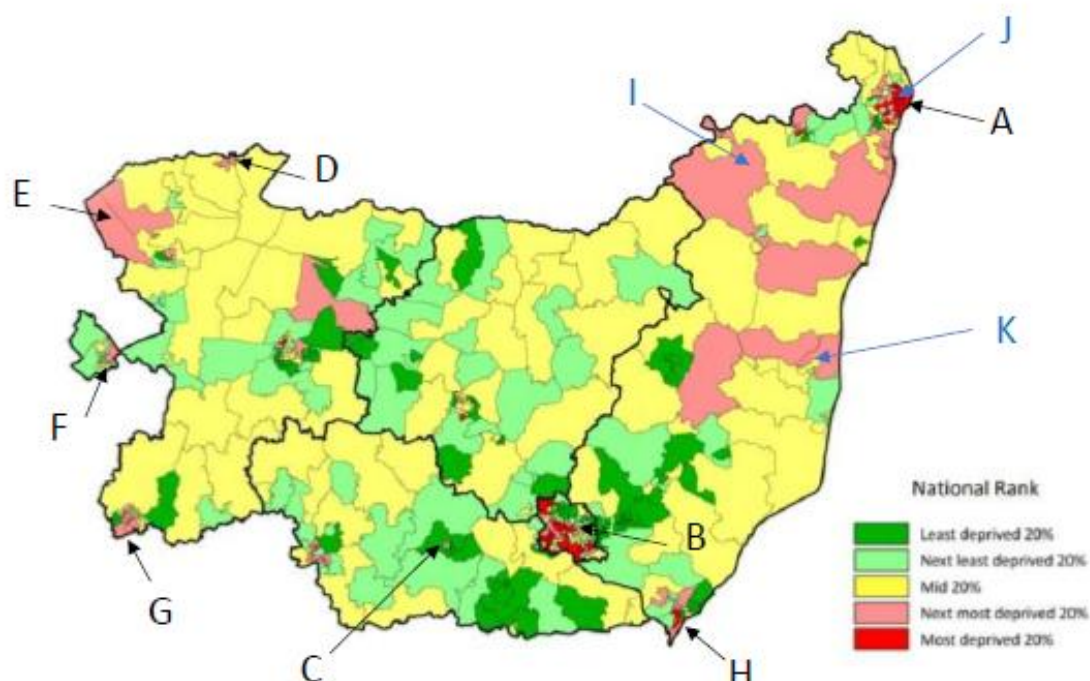
Catch22, Suffolk Positive Futures - June 2025 - Full Activity programme						
						
Supported by Suffolk's Police & Crime Commissioner						
Weekly sessions	Day	Activity	Time	Location	Ages	Session Dates
						LA Area
	Monday	Gunton Estate Multi Sports	5.30pm-6.30pm	Gunton Park, Lowestoft	10-16	April to Nov
	Monday	Felixstowe Football Project	5.45pm-7pm	Grange Farm Avenue park (nr skatepark)	11-18	April - Nov
	Monday	Beccles Project	7pm to 8pm	The Venue SJLHS Beccles	10-16	On-going
	Tuesday	Boxing / Fitness	3pm-4pm	Breckland School, Brandon	11-16	On-going
	Tuesday	Boxing / Fitness	4.30pm-5.30pm	Hadleigh Leisure Centre	10-16	On-going
	Tuesday	Boxing / Fitness	5.30pm-6.30pm	Newmarket Leisure Centre	10-18	On-going
	Tuesday	Whitton Estate Football Project	5.30pm-6.30pm	Kirkley and Pakefield Football Club	10-15	On-going
	Tuesday	Boxing / Fitness	7pm-8pm	Mildenhall Hub, Mildenhall	10-18	On-going
	Wednesday	Boxing wellbeing project	1.15pm-2.15pm	Denes High School, Lowestoft	11-16	Term-time only
	Wednesday	Tennis Taster	3pm-4pm	Denes High School, Lowestoft	11-16	April-July 25
	Wednesday	Football - Harbour Estate	5pm-6pm	Denes High School, Lowestoft	10-15	On-going
	Wednesday	Boxing / Fitness	6pm to 7pm	Murrayside Community Centre, Ipswich	10-18	On-going
	Wednesday	Street Cricket	5.30pm-7pm	Chantry Sports Centre, Ipswich	8-16	On-going
	Thursday	Maple Park Sports project	4.30pm-6pm	Maple Park, Ipswich	6-16	April-Nov
	Friday	Boxing	1.45pm-2.45pm	Grange Fitness Martlesham	11-16	Monthly during term time
	Friday	Lowestoft Street Cricket	5pm-6pm	Gunton Park, Lowestoft	10-16	On-going
	Friday	Haverhill football project	7pm-8.30pm	Haverhill Leisure Centre (Abbeycroft)	10-18	On-going
	Friday	Lowestoft 16-19yr olds football project	6:30pm to 7:30pm	Barnards Meadow, Lowestoft	16-19	On-going
Holiday Projects						
		Activity	Time	Location	Ages	Session Dates
						LA Area
	Lowestoft	Fit and Fed Projects (HAF)	TBC	Beccles, Read Oak and Northfield Primary schools + Denes High School	8 to 16	Easter, October and Summer Holidays
	Lowestoft	Summer diversionary sports	TBC	Various Parks and the beach front in Lowestoft	8 to 16	Easter, October and Summer Holidays
	Ipswich	Jumpers For Goalposts Projects	TBC	Various parks in Ipswich	10 to 16	Easter, October and Summer Holidays
Coming soon						
		Activity	Time	Location	Ages	Session Dates
						LA Area
	Leiston Sports project	Open access sports session taking place in Leiston	TBC	TBC - Likely Leisure Centre	10 to 16	October onwards

Delivering in the most deprived areas of Suffolk

The below map was taken from [Public Health Suffolk's indices of multiple deprivation](#) and shows levels of deprivation across Suffolk, with the darker colours indicating high levels of deprivation. Deprivation includes a range of measures comprising levels of income, crime, health and living environment amongst others.

We have marked on the map the areas where we operate and also the numbers of young people we worked with from those areas in the past 12 months. The map shows a direct correlation between our project locations, the most deprived and next most deprived areas in Suffolk, indicating that we are delivering in the 'right' areas in Suffolk.

The map has also been updated with new projects planned for 2025/26 (I, J & K), again targeting delivery to the most 'in need' areas of the county. Key below.



KEY		
A	LOWESTOFT (Various projects)	540 young people worked with
B	IPSWICH (Various projects)	572 young people worked with
C	HADLEIGH PROJECT	45 Young people worked with
D	BRANDON PROJECT	42 young people worked with
E	MILDENHALL PROJECT	31 Young people worked with
F	NEWMARKET PROJECT	49 Young people worked with
G	HAVERHILL PROJECT	158 Young people worked with
H	FELIXSTOWE PROJECT	42 Young people worked with
I	BECCLES PROJECT	Starting April 2025
J	LOWESTOFT PROJECT (Older YP)	Starting April 2025
K	LEISTON PROJECT	TBC

The map has two significant areas of extremely high deprivation in Ipswich and Lowestoft which both feature in the top 20% nationally. This corresponds to our two main areas of delivery, where in the past 12 months we worked with 572 young people in Ipswich and 540 young people in Lowestoft and surrounding area.