



Suffolk Police and Crime Commissioner

Making Suffolk a safer place to live, work, travel and invest

ORIGINATOR: HEAD OF COMMISSIONING

DECISION NUMBER: 12 - 2023

REASON FOR SUBMISSION: FOR DECISION

SUBMITTED TO: POLICE AND CRIME COMMISSIONER

SUBJECT: AWARD OF CRIME AND DISORDER REDUCTION GRANT – CATCH22 SUFFOLK POSITIVE FUTURES 2023 - 2025 FUNDING

SUMMARY:

1. In accordance with the provisions in the Anti-Social Behaviour, Crime and Policing Act 2014 the Police and Crime Commissioner can commission services that:
 - a) secure, or contribute to securing, crime and disorder reduction in Suffolk;
 - b) are intended to help victims or witnesses of, or other persons affected by, offences and anti-social behaviour.
2. This report seeks approval to award a Crime and Disorder Reduction Grant to Catch22 for £75,000 to contribute to delivering Suffolk Positive Futures across Suffolk for the period 1 April 2023 to 31 March 2025.
3. Suffolk Positive Futures delivers an 'early intervention' approach to tackling crime and anti-social behaviour by providing a compelling alternative for young people through the delivery of sports-based activity.
4. The funding will enable crime and disorder reduction activity and support Objective 2 in the Police and Crime Plan by investing in an initiative which prevents and reduces crime.

RECOMMENDATION:

1. It is recommended that the Police and Crime Commissioner (PCC) awards grant funding of £75,000 per annum to Catch22 for delivery of the Suffolk Positive Futures project between 1 April 2023 and 31 March 2025.

APPROVAL BY: PCC

The recommendation set out above is agreed.

A handwritten signature in black ink that reads "Tim Parry". The signature is written in a cursive style with a large initial 'T'.

Signature:

Date: 22 March 2023

DETAIL OF THE SUBMISSION

1. INTRODUCTION

- 1.1 The Police and Crime Commissioner (PCC) can commission services that:
- a) secure, or contribute to securing, crime and disorder reduction in Suffolk;
 - b) are intended to help victims or witnesses of, or other persons affected by, offences and anti-social behaviour.
- This is in accordance with the provisions in the Anti-Social Behaviour, Crime and Policing Act 2014. In applying this provision, the PCC will ensure that the services commissioned are also consistent with the Suffolk Police and Crime Plan.
- 1.2 This report seeks approval from the PCC to award a grant of £75,000 per annum to support the delivery of the Suffolk Positive Futures programme of activities by Catch22 for the period 1 April 2023 to 31 March 2025.

2. POLICE AND CRIME PLAN OBJECTIVES

- 2.1 In February 2022, a new Police and Crime Plan for the period 2022-2025 was published. Objective 2 sets out the intention to provide services which support victims of crime and invest in initiatives which reduce crime.
- 2.2 The proposed grant to Catch22 for delivery of Suffolk Positive Futures will contribute to the following activity within Objective 2:
- Use crime and disorder reduction funding to divert young people from crime and seek to work with the Constabulary and partners to reduce reoffending.
 - Consider with the Constabulary areas where investment might reduce non-crime demand on the police.
 - Reducing re-offending and preventing crime.
 - Initiatives which reduce the demand on the police in particular policing the night-time economy (NTE), anti-social behaviour (ASB) and reducing crime and disorder in our towns.
 - The impact of substance misuse on crime and disorder.
 - Supporting young people – this could include initiatives which divert young people from criminality, enhance their skills or provide crime prevention advice and supports them so they do not become victims.

3. CATCH22 - SUFFOLK POSITIVE FUTURES

- 3.1 Catch22 is a charity that describes itself as a not for profit business with a social mission. The organisation works across five areas: justice; education; vocational training and employability; young people and families; and National Citizen Service to design and deliver services that build resilience and aspiration in people of all ages within communities across the UK.
- 3.2 The Catch22 Suffolk Positive Futures project is designed to reach young people on streets and estates, at times when they are most in need. The project, supported by the PCC since 2013, has been transforming young people's lives and making a significant impact in some of the most deprived communities in Suffolk.
- 3.3 The project does this by providing long-term support to vulnerable 10 – 19 year olds at risk of crime and ASB, primarily through sports based activity. It also delivers projects such as holiday

hunger and summer diversionary projects, sports leadership qualifications, drug and alcohol and healthy living awareness raising sessions.

- 3.4 The project delivers an 'early intervention' approach to tackling crime and anti-social behaviour (ASB) by providing a compelling alternative. The project contributes to a number of key priorities in relation to making Suffolk a safer area for all by:
- Diverting young people from involvement in ASB and gang related activity, especially the young people on the periphery of this activity.
 - Supporting local communities to tackle ASB, through engagement and diversion.
 - Addressing the risk factors and strengthening the protective factors to enable young people to choose leadership and positive community action instead of crime.
 - Reducing crime and, by preventing offending and ASB, decreasing demand for front-line criminal justice services.
- 3.5 The PCC funding supports the Project Manager and Coordinator posts. Funding for 15 sessional staff and activities is generated through a wide variety of other partners including charitable foundations and local authorities. Volunteers are also utilised and many have been service users who engage to give something back to the community.
- 3.6 Suffolk Positive Futures projects run in areas of high deprivation and where higher rates of crime and ASB are reported in order to engage the most vulnerable young people in Suffolk. Delivery is county wide with ongoing delivery commitments in: Ipswich (multiple sites), Lowestoft (multiple sites), Leiston, Hadleigh, Haverhill, Brandon, Newmarket and Mildenhall. Additional holiday projects are run in partnership with local authorities. See Appendix A for the anticipated delivery in 2023/24.

SERVICE DELIVERY AND IMPACT

- 3.7 The Catch22 Suffolk Positive Futures interim monitoring report (April – September 2022) shows that the programme is back to 'pre-pandemic' levels of engagement with:
- 1,152 young people attending the project (surpassing the previous 12 month total of 1,187 individuals) through 5,651 attendances.
 - 371 activity sessions delivered and over 721 hours of sporting activity provided.
 - 22% of participants were girls, 12% of participants were from a Black, Asian, or other minority ethnic background and 12% non-white British.
 - 18 young people not in education working towards a recognised qualification in the period.
 - 20 young people starting volunteering placements.
- 3.8 An ongoing survey captures feedback from participants. 91 young people completed the survey (April – Sept 2022) and the results show that:
- 100% of respondents said they would recommend the project to others.
 - 93% of those who felt it relevant, said that their mental health had improved due to their attendance.
 - 100% felt their physical health had improved.
 - 95% of participants surveyed felt safer in their community due to participation.
 - In response to the question "what else have you gained from attending the project":
 - 86% said they now had access to role models,
 - 78% had improved confidence,
 - 73% said they liked being part of a team,
 - 62% said they now take pride in their local area,
 - 22% said they were no longer getting into trouble,
 - 21% said they were no longer hanging about on the streets.

- 3.9 The PCC funding for 2022/23 requested that Catch22 worked on a number of areas to enhance delivery and ensure alignment with the new Police and Crime Plan 2022-25. In delivering on these they have:
- Worked with the Suffolk Youth Justice Service and Suffolk Constabulary to encourage (and capture the volume of) referrals of young people known to the criminal justice system or those who are vulnerable to criminal activities and exploitation. The work in reducing crime and ASB and preventing offending is intended to decrease the demand for front line services.
 - Suffolk Constabulary officers now regularly attend the Steering Group and Suffolk Positive Futures report a significant increase in police visits and contact since April 2022 with 17 visits across the county. Publicity generated on social media has reached 1,500 people.
 - 18% of referrals were formal referrals from partners including police and youth justice.
 - Project staff have completed Youth Mental Health training, anti-slavery training and bystander intervention training to further support young people.
 - Reviewed geographic areas of delivery in line with data, identified need and professional opinion from police and partners.
 - This is an area of continual review. Additional data has been provided to show the correlation between delivery and areas of deprivation. See Appendix B.
 - 1,152 young people living in the top 40% deprived areas of Suffolk engaged in the service April – Sept 2022 including 109 individuals in the Maple Park area of Ipswich and 154 on the Gunton estate in Lowestoft.
 - New projects in Ipswich (monthly boxing project targeting those at risk of exclusion and Lowestoft (Gunton Estate open access sports project in areas of high youth nuisance) have been embedded.
 - Consideration of new provision in Felixstowe has commenced with delivery, subject to funding, planned for 2023/24.

4. MONITORING AND OUTCOMES

- 4.1 Monitoring will be undertaken at six months and year end through written reports setting out activity and progress towards outcomes, along with financial expenditure. These reports will be supplemented by quarterly meetings between the OPCC and Catch22.
- 4.2 The service outcomes are:
- Young people in local communities making positive decisions.
 - Reduction in ASB levels.
 - Exit routes into other provision/volunteering/employment opportunities.
 - Young people integrating with local community.
 - Social return on investment.
- 4.3 To achieve the outcomes the service will deliver and report on the following:
- Generation of no less than £75,000 through local and national funding opportunities to match the PCC grant.
 - Establish new provision / delivery areas that are a priority for policing, the PCC and local communities and aim to deliver projects in all of the 'most deprived 20%' areas of Suffolk by April 2025, subject to consultation.
 - Continue engagement with Suffolk Constabulary and partners, raising awareness and driving up referrals.
 - Work with a minimum 1,200 young people in the most deprived 40% areas of Suffolk.

- Deliver 1,200 hours of activity in those areas to divert young people from criminal activity and provide a safe place (increase by 10% each year 2023 to 2025).
- Opportunities for 25 vulnerable young people (per annum) not in school or mainstream education to gain a recognised qualification and pursue volunteering activities.
- Gather service user feedback from approx. 20% of users each year to assess progress towards outcomes and monitor feedback on the safety of local areas, crime, ASB and victimisation.

5. FINANCIAL IMPLICATIONS

- 5.1 The total cost of delivery for the project in Suffolk per annum is £145k - £160k covering staff costs, travel, programme deliver, facilities, supplies, IT and Catch22 management charge. It is recommended that the PCC approves a grant of £75,000 per annum from his commissioning budget for the delivery of Suffolk Positive Futures between 1 April 2023 to 31 March 2025.
- 5.2 This level of funding is commensurate with the grant in 2022/23 and the PCC grant will only be used towards the costs of the full-time permanent Project Manager and Coordinator salaries (total budget of £96k in 2022/23).
- 5.3 Suffolk Positive Futures will cover the remainder of the costs through their own fund raising and seeking additional grants. There is a strong track record of income generation: in the year to September 2022 for every £1 invested from the PCC another £1.15p of additional funding was secured by the project. The project has already secured funding for Ipswich projects in 2023 and has other applications in the pipeline.
- 5.4 This additional funding goes towards the sessional staff and delivery costs is generated through a wide variety of other sources including charitable foundations (local and national) and local authorities. The project makes full use of volunteers including those who have used the service in the past and want to give something back to the project.
- 5.5 Providing a grant for two years, until 31 March 2025, ensures there is stability for the project so that partners and beneficiaries (young people) know the provision will continue and referrals can continue to be made.
- 5.6 Successful delivery of the project and reporting on the outputs and outcomes by Catch22 are a condition of continuation funding at the end of the financial year.
- 5.7 This two year award is also subject to the policing grant to Suffolk remaining the same. Should there be any risk to continuation of funding the PCC will make the grant recipient aware as soon as practicable.

6. OTHER IMPLICATIONS AND RISKS

- 6.1 An assessment of risk in delivery of the service has been undertaken. This assessment has considered the value of the grant sought, the duration of delivery and the grant recipient's history of delivery and ability to deliver. The monitoring arrangements outlined in the conditions of award reflect the fact that Catch22 Suffolk Positive Futures continue to successfully deliver the service and regularly report on activity and outcomes.
- 6.2 Should there be any risk to the service being delivered, Catch22 Suffolk Positive Futures are required to notify the PCC.

7. RECOMMENDATION

- 7.1 It is recommended that the Police and Crime Commissioner (PCC) awards grant funding of £75,000 per annum to Catch22 for delivery of the Suffolk Positive Futures project between 1 April 2023 and 31 March 2025.

ORIGINATOR CHECKLIST (MUST BE COMPLETED)	PLEASE STATE 'YES' OR 'NO'
Has legal advice been sought on this submission?	NO
Has the PCC's Chief Finance Officer been consulted?	NO
Have equality, diversity and human rights implications been considered including equality analysis, as appropriate?	YES
Have human resource implications been considered?	YES
Is the recommendation consistent with the objectives in the Police and Crime Plan?	YES
Has consultation been undertaken with people or agencies likely to be affected by the recommendation?	YES
Has communications advice been sought on areas of likely media interest and how they might be managed?	YES
Have all relevant ethical factors been taken into consideration in developing this submission?	YES

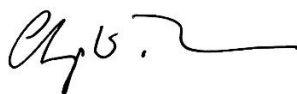
In relation to the above, please ensure that all relevant issues have been highlighted in the 'other implications and risks' section of the submission.

APPROVAL TO SUBMIT TO THE DECISION-MAKER

Chief Executive

I am satisfied that relevant advice has been taken into account in the preparation of the report and that this is an appropriate request to be submitted to the PCC.

Signature:



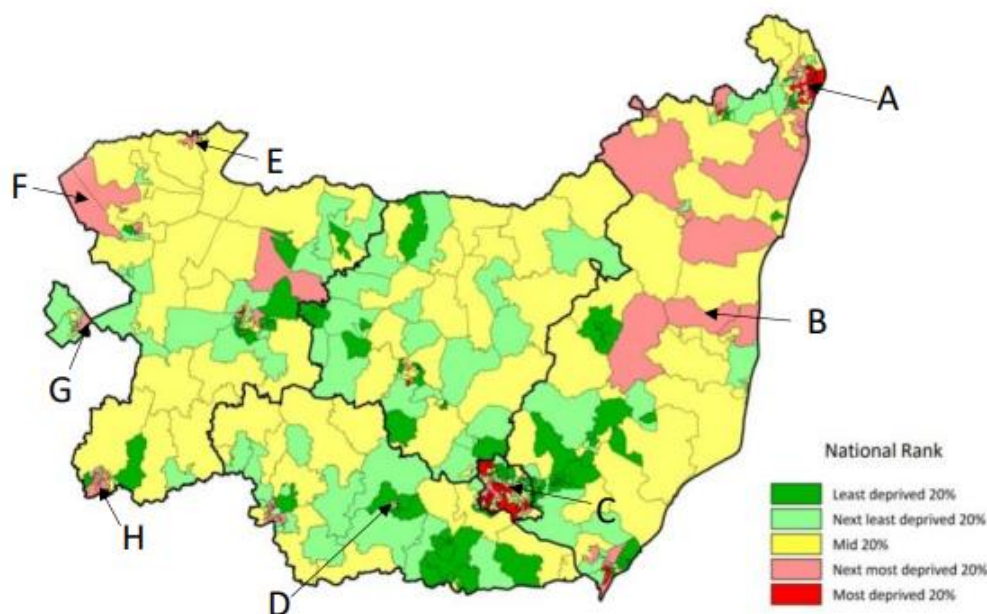
Date: 22 March 2023

Catch22, Suffolk Positive Futures activities March 2023					
Day	Activity	Time	Location	Session Dates	LA Area
Monday	Sports Leaders Course (Schools)	3-5pm	Pakefield High School	Term time only	East Suffolk
Monday	Gunton Estate project (see also Wed 5pm)	5.30pm-6.30pm	Gunton Community Park	Restarts April 2023	East Suffolk
Tuesday	Brandon Boxing	3pm-4pm	Breckland School	On-going	West Suffolk
Tuesday	Boxing / Fitness	4.30pm-5.30pm	Hadleigh Leisure Centre	Term time only	Babergh
Tuesday	Newmarket Boxing	5.30-6.30pm	Newmarket Leisure Centre	On-going	West Suffolk
Tuesday	Whitton Estate football project (Lowestoft)	5.30-6.30pm	Kirkley and Pakefield Football Club	On-going	East Suffolk
Tuesday	Mildenhall Boxing	7pm-8pm	Mildenhall Hub	On-going	West Suffolk
Wednesday	Whitton football project (Ipswich)	4pm-5pm	Whitton Sports Centre	On-going	Ipswich
Wednesday	Boxing Wellbeing Project	3.15pm-4.15pm	Ormiston Denes Academy	Term time only	East Suffolk
Wednesday	Football - Gunton Estate	5pm-6pm	Ormiston Denes Academy	On-going	East Suffolk
Wednesday	Street Cricket	5.30pm-7pm	Chantry Academy Sports Centre	On-going	Ipswich
Wednesday	Boxing	6pm-7pm	Murrayside Community Centre	On-going	Ipswich
Thursday	Maple Park Sports project	4.30pm-6pm	Maple Park	On-going	Ipswich
Thursday	Boxing Wellbeing Project	3.30pm-4.30pm	Ipswich Academy	Term time only	Ipswich
Friday	Northgate High School Boxing project	1.30pm-2.30pm	Grange Fitness, Martlesham	Term time only	Ipswich
Friday	Lowestoft Street Cricket	6pm-7.30pm	East Point Academy & Britten Field	On-going	East Suffolk
Friday	Haverhill football project	7pm-8.30pm	Haverhill Leisure Centre	On-going	West Suffolk
Friday	Leiston Girls Only Football	8pm-9pm	Leiston Leisure Centre	On-going	East Suffolk
Holiday Projects	Activity	Time	Location	Session Dates	LA Area
Lowestoft	Fit and Fed projects (HAF)	TBC	Phoenix St Peter Academy, Northfield St Nicholas, Westwood Primary, Dell Primary and Ormiston Denes Academy	Easter, May, October and Feb Half Terms and Summer Holidays	East Suffolk
Lowestoft	Summer diversionary sports	TBC	Normanston Park and Gunton Community Park	Summer Holiday	East Suffolk
Ipswich	Fit and Fed projects (HAF)	TBC	Currently working with Northgate High School, Ipswich Academy, Chantry Academy and Castle Hill Primary	Easter & May half terms and Summer Holidays	Ipswich
Ipswich	Jumpers For Goalposts projects	TBC	Various Park in Ipswich estates	Easter, May and Oct Half Terms and Summer Holidays	Ipswich
Coming soon	Activity	Time	Location	Session Dates	LA Area
Felixstowe	Open access sports project located near Skatepark area of west Felixstowe	TBC	Grange Farm Avenue, near Skatepark and behind Morrisons	May onwards	East Suffolk

Delivering in the most deprived areas of Suffolk

The below map was taken from [Public Health Suffolk's indices of multiple deprivation](#) and shows levels of deprivation across Suffolk, with the darker colours indicating high levels of deprivation. Deprivation includes a range of measures comprising levels of income, crime, health and living environment amongst others.

We have marked on the map the areas where we operate and also the numbers of young people we worked with from those areas in the past 6 months. The map shows a direct correlation between our project locations, the most deprived and next most deprived areas in Suffolk, indicating that we are delivering in the 'right' areas in Suffolk.



KEY		
A	LOWESTOFT (Various projects)	398 young people worked with
B	SAXMUNDHAM AND LEISTON PROJECTS	36 young people worked with
C	IPSWICH (Various projects)	471 young people worked with
D	HADLEIGH PROJECT	29 Young people worked with
E	BRANDON PROJECT	30 young people worked with
F	MILDENHALL PROJECT	26 Young people worked with
G	NEWMARKET PROJECT	38 Young people worked with
H	HAVERHILL PROJECT	48Young people worked with

The map has two significant areas of extremely high deprivation in Ipswich and Lowestoft which both feature in the top 20% nationally. This corresponds to our two main areas of delivery, where in the past 6 months we worked with 471 young people in Ipswich and 398 young people in Lowestoft and surrounding area.